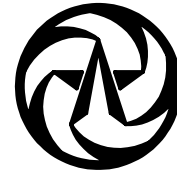


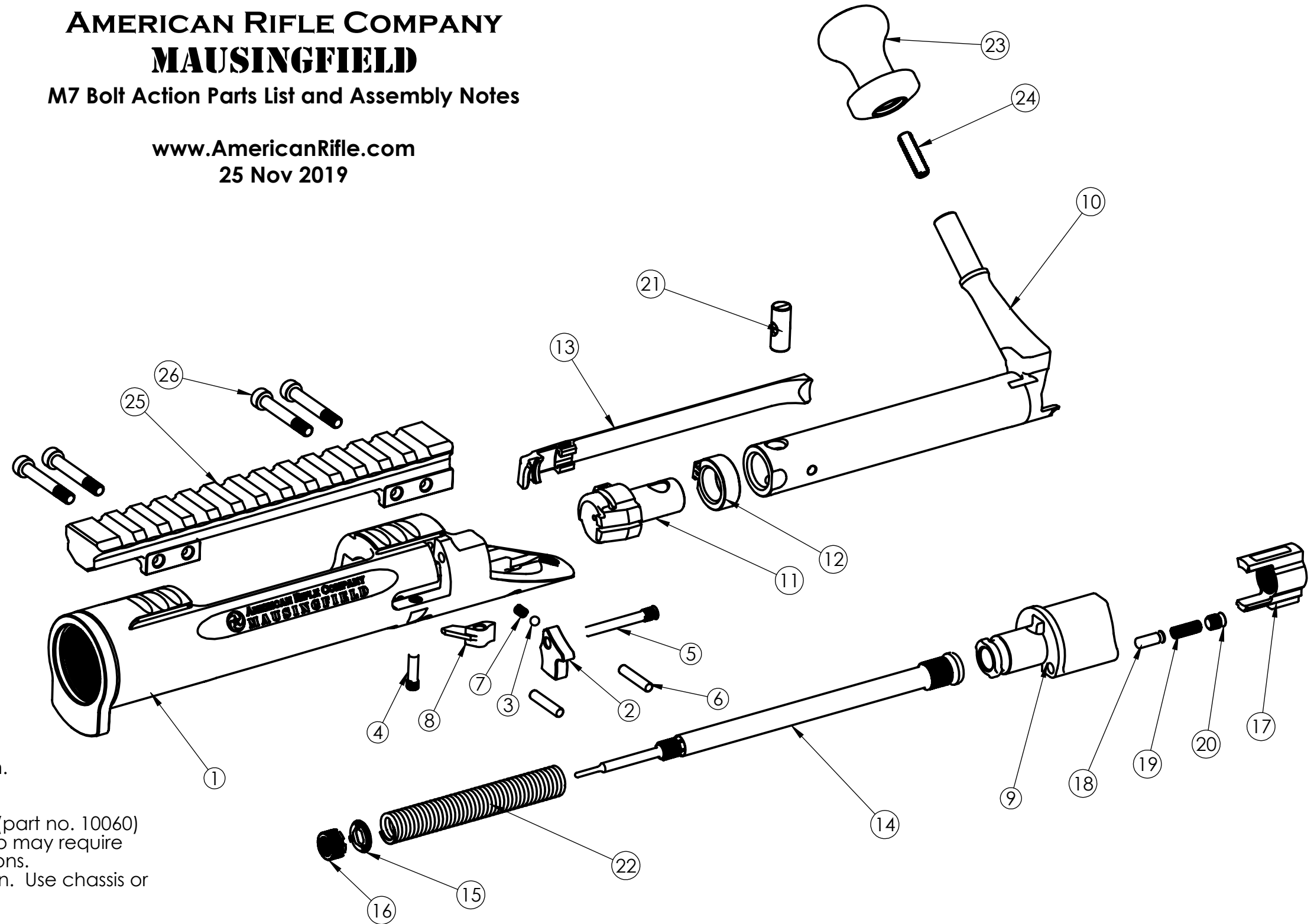
| ITEM NO. | PART NUMBER | DESCRIPTION | QTY. |
|----------|-------------|--------------------------------|------|
| 1 | 10006 | receiver, M7 | 1 |
| 2 | 10010 | bolt stop, M7 | 1 |
| 3 | 10022 | ball 3mm steel | 1 |
| 4 | 10014 | ejector pin | 1 |
| 5 | 10012 | bolt stop pin, M7 | 1 |
| 6 | 10024 | fire control pin | 2 |
| 7 | 10020 | bolt stop spring, M5 M7 | 1 |
| 8 | 10168 | ejector default, standard | 1 |
| 9 | 10040 Rev B | bolt shroud M7 M9 | 1 |
| 10 | 10186 | bolt M7 | 1 |
| 11 | 10030 | bolt head, M7 | 1 |
| 12 | 10032 | extractor collar, M7 | 1 |
| 13 | 10038 | extractor, M7 | 1 |
| 14 | 10050 | striker, M7 M9 | 1 |
| 15 | 10054 | striker lock washer, M7 M9 | 1 |
| 16 | 10052 | striker lock nut, M7 M9 | 1 |
| 17 | 10048 | cocking piece M7 M9 | 1 |
| 18 | 10042 | bolt shroud locking pin, M7 M9 | 1 |
| 19 | 10046 | bolt shroud spring | 1 |
| 20 | 10044 | bolt shroud screw, M7 M9 | 1 |
| 21 | 10036 | bolt head pin M3 M5 M7 M9 | 1 |
| 22 | 10056 | striker spring 25 lbs, M7 M9 | 1 |
| 23 | 10058 | bolt knob | 1 |
| 24 | 10060 | bolt knob set screw | 1 |
| 25 | 10144 | rail Picatinny, M7 | 1 |
| 26 | 10136 | rail screw, M7 | 4 |



AMERICAN RIFLE COMPANY MAUSINGFIELD

M7 Bolt Action Parts List and Assembly Notes

www.AmericanRifle.com
25 Nov 2019



Notes

1. Torque rail screw (part no. 10136) to 30 lb-in.
2. Torque bolt stop pin (part no. 10012) to 15 lb-in.
3. Torque ejector screw (part no. 10014) to 15 lb-in.
4. Torque bolt shroud screw (part no. 10044) to 15 lb-in.
5. Torque cocking piece (part no. 10048) to 40 lb-in.
6. Hand tighten bolt knob (part no. 10058.)
7. Use of Loctite 242 or 243 (blue) on bolt knob screw (part no. 10060) is recommended. If Loctite is used, removal of knob may require heating. See Loctite container for heating instructions.
8. Action screws are typically torqued to about 65 lb-in. Use chassis or stock maker's recommendation.
9. Barrels are typically torqued to about 100-150 lb-ft.