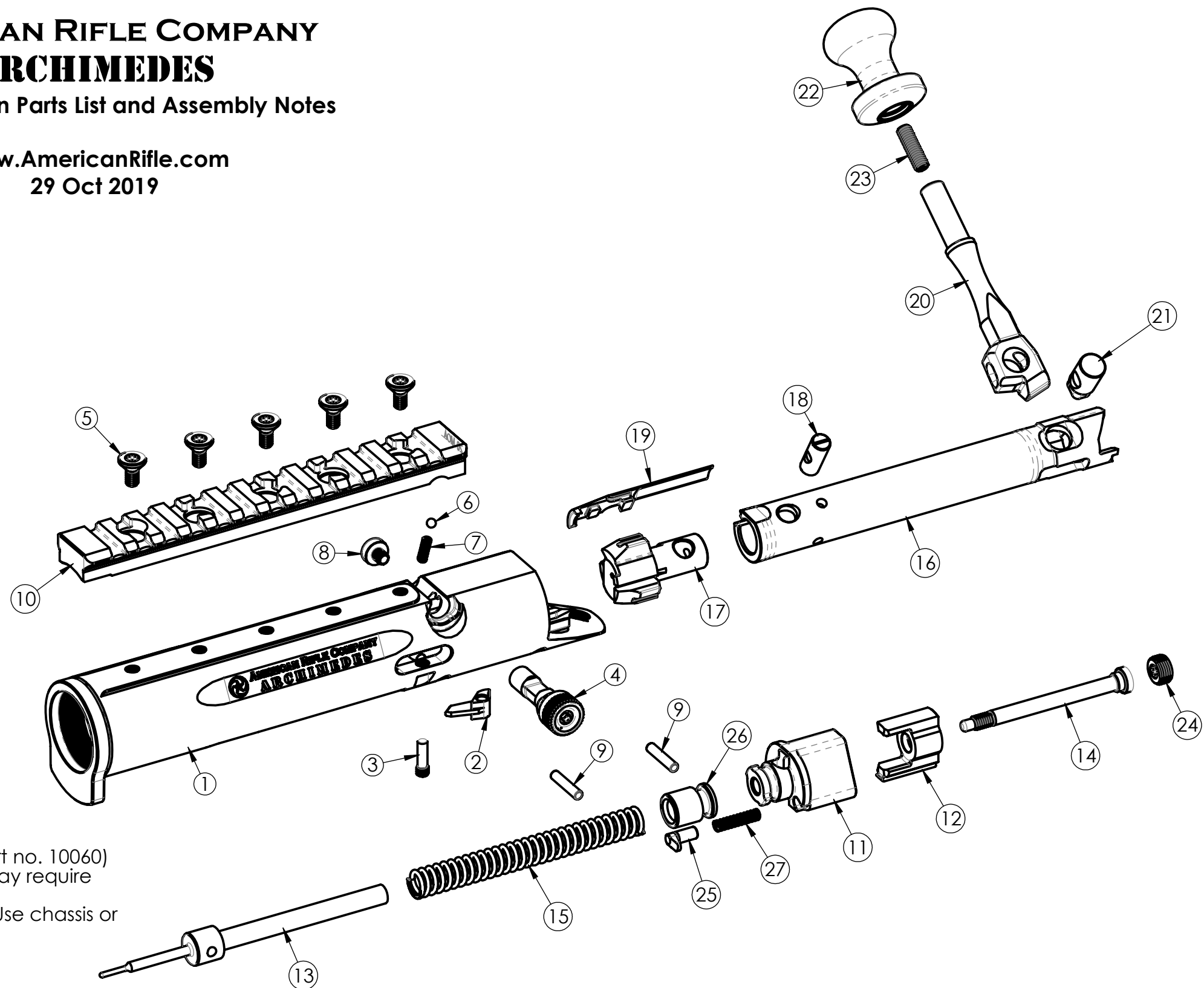


ITEM NO.	PART NUMBER	DESCRIPTION	QTY.
1	10106	M3 receiver	1
2	10168	ejector default, standard	1
3	10014	ejector pin	1
4	10076	bolt stop M3 M9	1
5	10084	screw, rail	5
6	10022	ball 3mm steel	1
7	10080	spring, bolt stop	1
8	10078	bolt stop screw M3 M9	1
9	10024	fire control pin	2
10	10108	M3 rail short action	1
11	10112	M3 bolt shroud	1
12	10116	M3 cocking piece	1
13	10122	M3 striker	1
14	10118	M3 striker screw	1
15	10124	M3 striker spring SA 22 lb	1
16	10126	M3 bolt	1
17	10110	bolt head M3 M9	1
18	10036	bolt head pin M3 M5 M7 M9	1
19	10096	extractor M3 M9	1
20	10128 Rev B	M3 bolt handle	1
21	10130	M3 bolt handle pivot pin	1
22	10058	bolt knob	1
23	10060	bolt knob set screw	1
24	10132	M3 striker set screw	1
25	10114	M3 bolt shroud locking pin	1
26	10120 rev B	M3 striker bushing	1
27	10198	M3 bolt shroud spring	1



AMERICAN RIFLE COMPANY
ARCHIMEDES
M3 Bolt Action Parts List and Assembly Notes

www.AmericanRifle.com
 29 Oct 2019



Notes

1. Torque rail screw (part no. 10084) to 40 lb-in.
2. Torque bolt stop screw (part n. 10078) to 40 lb-in.
3. Torque ejector screw (part no. 10014) to 15 lb-in.
4. Torque striker screw (part no. 10118) to 40 lb-in.
5. Torque striker set screw (part no. 10132) to 40 lb-in.
6. Hand tighten bolt knob (part no. 10058.)
7. Use of Loctite 242 or 243 (blue) on bolt knob screw (part no. 10060) is recommended. If Loctite is used, removal of knob may require heating. See Loctite container for heating instructions.
8. Action screws are typically torqued to about 65 lb-in. Use chassis or stock maker's recommendation.
9. Barrels are typically torqued to about 100-150 lb-ft.